

OPERATION INSTRUCTION



Connect of the Device

Cautions :

- Install the voltagefall device before installing in the Track or Bus with 24V for being used in the car with 12V and grounding in cathode.
- Cut the cathode cable of the battery before installing to avoid the short circuit of the machine.
- Don't fix the cable of machine near the removable part of the car,such as grip brake , gearlever , seat fixed navitrack and so on. Don't fix the cable of the machine near the heat area , Such as caliduct for let or heat will cause the melt of the insulative cable or damage to cause the shortcircuit of the car.
- Don't put the yellow power cable cross the save hole into the engine house then connect the battery to avoid the damage of the power to arose the short circuit.
- Use the stated fuze (10A) to exchange the burned-out fuze . Use the fuze withhigh capacity to exchange the burned-out fuze or connect without any fuze will cause the fire or damage of the machine.

Any problem after exchanging the fuze,contact with repair center.

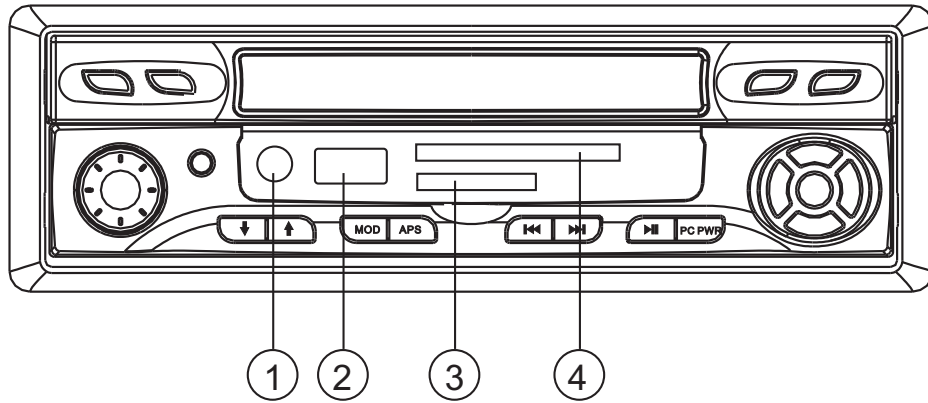
- Don't connect the power cable of other device to the machine toavoid the fire or too hot for overfreight.
- Wrap untapped cable of the loudspeaker with insulating tape toavoid the short circuit.
- Insulate any exposed cable then pack all the cable to avoid the touch between connection port and metal part of the machine.
- Connect the fire lead to on "Open/Close" of the power by using the fire switch key if there are no ACC place in the light of the car.
- Don't connect the output port of loudspeaker to avoid the damge of the amplifier. Don't use the 3-Wire loudspeaker. Don't connect the cable of the loudspeaker to the car.
- The power of the loudspeaker should be high-power with the least rating of 50W and 4-8 Ohm for impedance. Don't connect the cable of the loudspeaker out of the rangeof the Impedance to avoid the short circuit or damage of the loudspeaker.

Control panel layout



- | | |
|--|----------------------------|
| 1. Main display area | 2.Mic |
| 3. Volume control | |
| 4.Lcd panel control (move up and down) | |
| 5. RADIO/AV/VGA mode exchange | 6.Auto scan FM channel |
| 7. Previous channel | 8.Next channel |
| 9. PLAY/PAUSE | 10.Car Pc Power |
| 11.Direction arrow/selection button | 12.Power button |
| 13.Reduce LCD brightness | 14.USB/SD/CF/EAR jack |
| 15.Increase LCD brightness | 16.LCD panel in/out contro |

External card set



USB 2.0 High speed port

Can connect with external HDD for bigger capacity use, it also can support other usb device, such as keyboard, mouse..etc



Headset jack

When plug headset , amplifier output will be mute, when unplug it , sound will be normally output to the speaker.



External storage device. support music,movie,mp3,mp4,image....

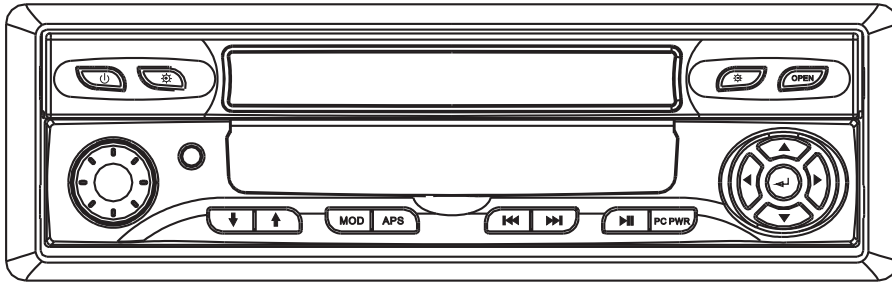


External storage device. support music,movie,mp3,mp4,image....


Product Specification

Monitor	7" new digital panel with resolution 800*480
View angle	130/105 (H / V)
Audio output	45*4Hi-fi Amplifier ,built Mic and earphone ,
Audio input	6 audio input
Video Input	2 Video input for dual display 1 VGA INPUT
AM/FM	
Touch function	Full touch screen , OSD menu touch
rearview	Auto rearview when backing the car
Power supply	DC 8V-14V
Working Temperature	-10---+60(?)
Storage Temperature	-20---+70(?)
Card set	SD/CF card set and 3 USB port for extensible
spare part s	peripheral and hardisk upgrading remote)with battery(,AV cable , male power cable,screw


Front Panel of the Monitor




Instruction of the Front Buttons for the Radio Function in being off PC

 Press Power Button , power on the device and enter to Radio mode


 Volume Control:Go round RightVolume +;
Go round Left Volume -;
Press Mute/Start;

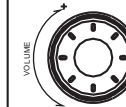
 Press Mode Button , switch among VGA /AV1/AV2/RADIO mode
Long Press APS the Button(3 secs);Auto Search and Storage from
87.5--108MHZ for FM; 530--1710KHZ for AM.

 The switch of last and next programe
Channel +/Channel-: Short Press the Two Buttons (1 sec)

Front Panel of the Monitor

Instruction of the Front Buttons for the Radio Function in being on PC

 PC Booting: short Press the button (1 sec)

 Volume Control:Go round RightVolume +;
Go round Left Volume -;
Press Mute/Start;

 Main TFT-LCD Control: BRIGHTNESS+

 Main TFT-LCD Control: BRIGHTNESS-


 Main TFT-LCD Dash in/out At the same time ,the display out

MUSIC MODE

 Last item
Next item

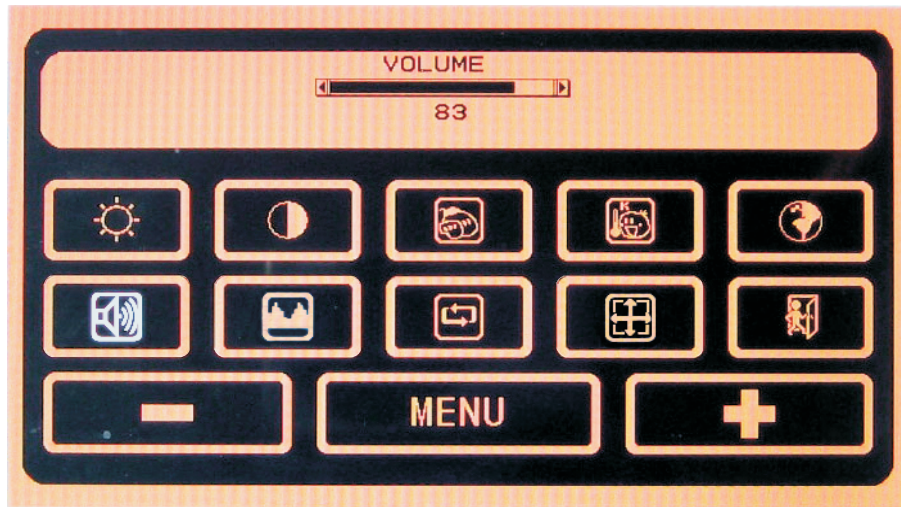
 PC RESET/PC PWR ON/OFF

RADIO MODE

 MODE:AM/FM Mode Switch:Short Press the button (1 secretary)
Long Press APS the Button(3 secs);Auto Search and Storage from
87.5--108MHZ for FM; 530--1710KHZ for AM.
Other Button Function is as same as Being off P

Basic operation

The main menu in VGA mode



This menu can't be activated in VGA mode. First, the entrance to the PC touch when in VGA mode, and press MENU button, the menu can be activated, then for operation of this menu



Press the key to adjust Brightness



Press the key to adjust Contrast



Press the key to adjust Saturation

Basic operation

The main menu in VGA mode



Press the key to adjust Tint



Press the key to choose the language



Press the key to mute, press again to get sound



Press the key to adjust the volume



Press the key for setting reset to factory



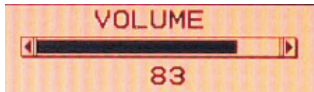
Press the key for Automatic Adjustment of VGA picture position

Basic operation

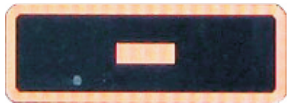
The main menu in VGA mode



Press the key to exit



Volume control column
(left to lower, right to louder)



Press the key directly to decrease the volume. To change a menu setting, press the key to adjust downward.



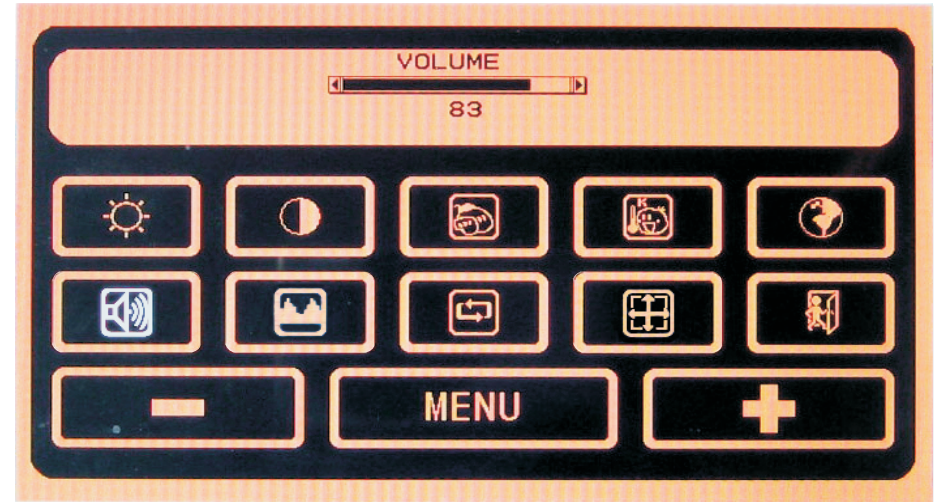
Press the key for EQ mode choosing



Press the key directly to increase the volume. To change a menu setting, press the key to adjust upward

Basic operation

The main menu in AV mode



Press the key to adjust Brightness



Press the key to adjust Contrast



Press the key to adjust Saturation

Basic operation

The main menu in AV mode



Press the key to adjust Tint



Press the key to choose the language



Press the key to mute,press again to get sound



Press the key to adjust the volume



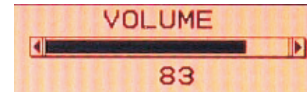
Press the key for setting reset to factory

Basic operation

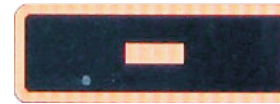
The main menu in AV mode



Press the key to exit



Volume control column
(left to lower,right to louder)



Press the key directly to decrease the volume. To change a menu setting, press the key to adjust downward.



Press the key for EQ mode choosing



Press the key directly to increase the volume. To change a menu setting, press the key to adjust upward

Basic operation

The main menu in RADIO mode



97.10 MHz

The current Frequency

MENU

Press to enter the EQ menu

SAVE

Press the key and the Channel number to store the current frequency with the preset number

Basic operation



Auto Scan the channels from the current frequency to the lower edge of the same range



Auto Scan the channels from the current frequency to the higher edge of the same range



Press the key to lower the frequency by 0.1MHz



Press the key to increase the frequency by 0.1MHz



Press the key directly to increase the volume. To change a menu setting, press the key to adjust upward



Press the key directly to decrease the volume. To change a menu setting, press the key to adjust downward

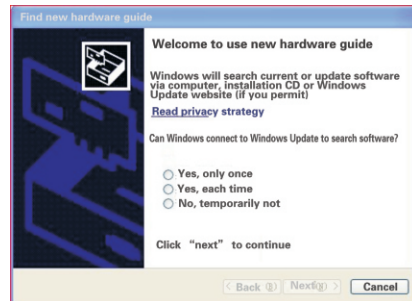
Cautions:

- The touch panel is used for Car PC without any other function to control the machine.
- Users should connect the touch panel control with USB cable of Car PC correctly and Install the right drive well before using the touch panel function.
- Users should calibrate and set before using touch panel function . Users should calibrate and set again after using some time normally (such as half a month) or any warp for the touch panel with image. Please calibrate every half a months to make sure the warp is within the allowable range.
- Following installation and calibration of CD drive of touch panel is VERSION3.1.4.2201. The CD drive soft of other section will be some difference for Installation and calibration. Please be patient to install correspon-ding section to install and calibrate.
- Don't touch the panel directly by hard thing or nail to avoid the scrape of the panel. Operate the machine by being attached touch pen.
- Clean the touch panel by soft cloth to avoid the scrape of the panel .Don't clean the touch panel by organic impregnant to avoid damage of ITO film to effect the cuphotic ratio of the touch panel.

● Installation of the CD Drive:

Start the Car PC after the confirmation of the correct connection.install the drive of the touch panel if it can run natural. Take WINDOWS XP an example to introduce the installation.

1、 The PC will display the new USB device when starting PC.



Please Choose "Cancel".

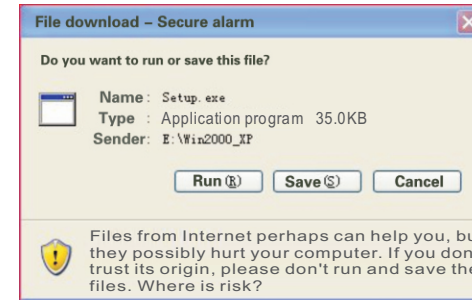
2、 Put the attached CD Drive into the DVD-ROM of the PC.If DVD-ROM set the function of auto run,it is as follows:



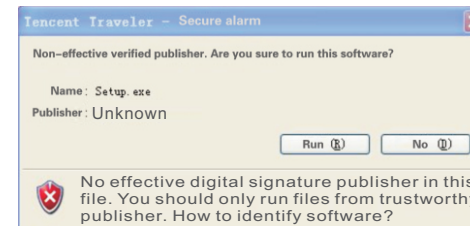
If DVD-ROM has no auto run function, double hit the "RUN.EXE" files in the root directory of the CD-Drive then the windows also will be as above.

3、 Start to Install:

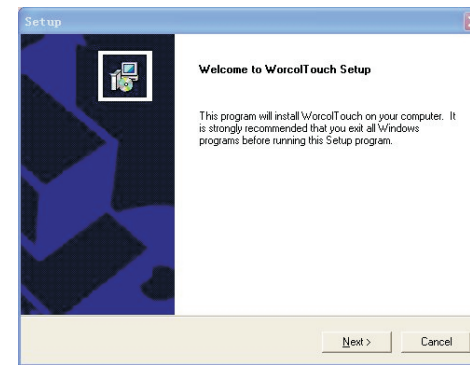
Select respond operation system WINDOWS 2000/XP to Install:



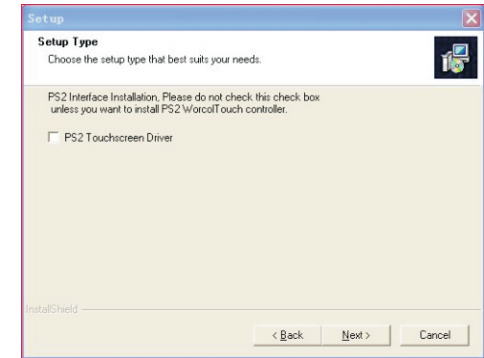
Select"Run" to Next Step:



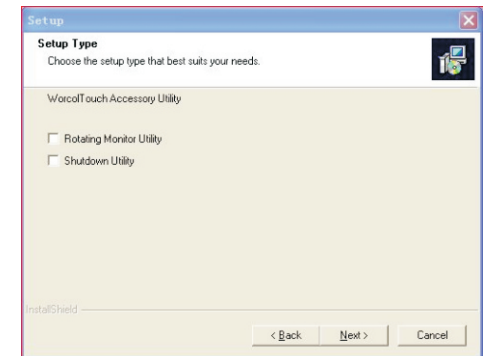
Select "Run" to Next Step:



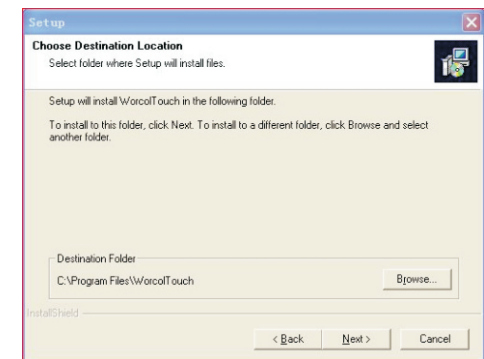
Select"Next" to next step:



Select"Next" to next step:

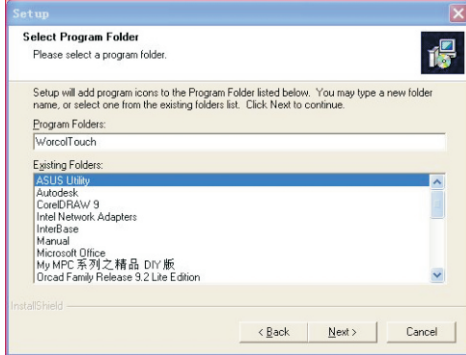


Select"Next" to next step:

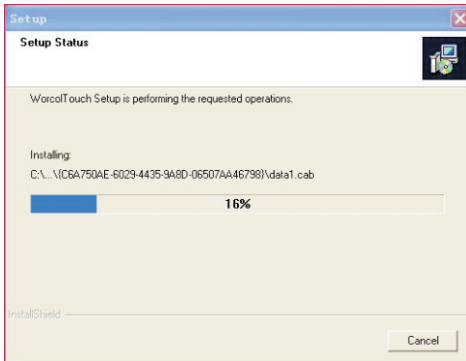


Press "Browse" or tolerant route to Install then press"Next" to next step:

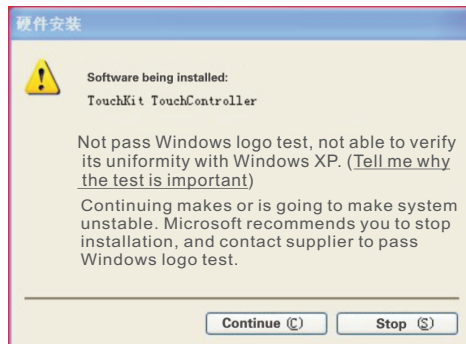
Operation of the Touch Panel



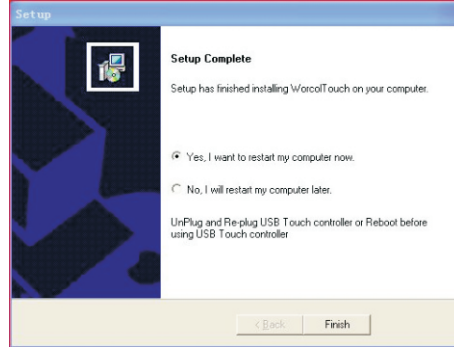
Select "NEXT" to Next Step:



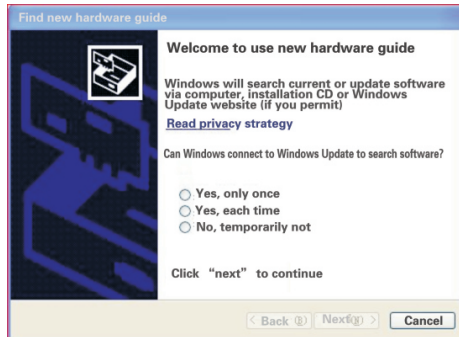
There will be following Image::



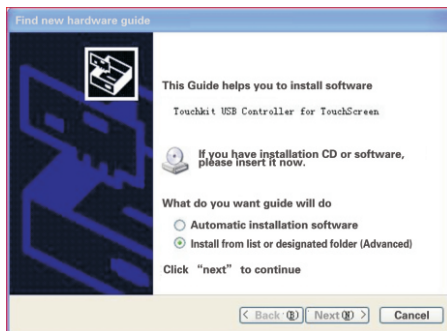
Select "Continue" to next step:



Select "Yes" to restart the PC:

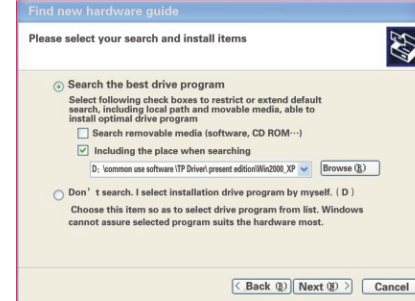


Select "No" to next step to continue to install:

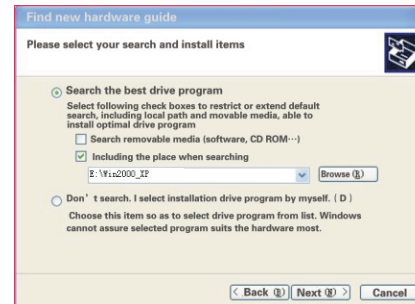


Select "Install from list or designated folder (Advanced)" to next step:

Operation of the Touch Panel

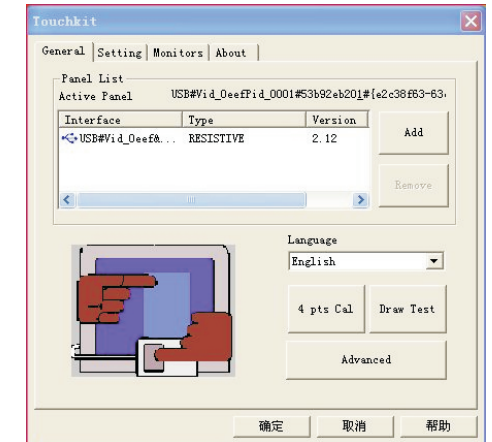


Select "Including the place when searching" at the entry of "Search the best drive procedure" then press "Browse" to change the route to "Win2000_XP" to next step



Press "Finish" to complete the control of the touch panel and the installation of the applied soft.

- Calibration of the touch panel:
Calibrate the touch panel after completing the drive.
Start the "Worcolto-uch" to following image:



Press "4 pts Cal" to Enter the image:

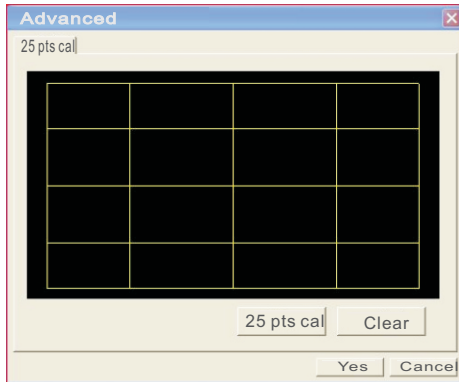


Press the flicking dot by touch pen until flicker stopped:

Operation of the Touch Panel



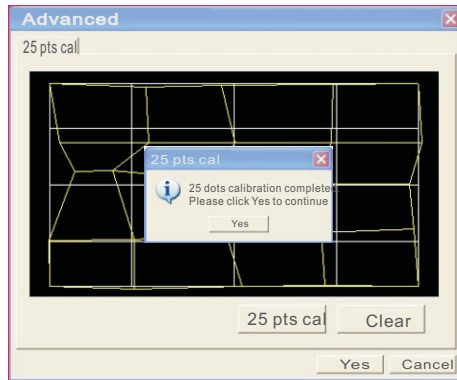
Press "Sure" to Complete the "4 pts Cal" Press "Advanced" to enter the more Clear Calibration Image:



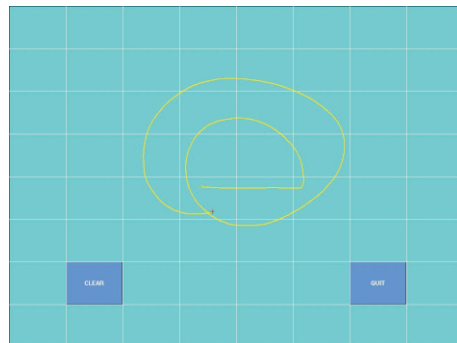
Press "25 pts cal"



Press the flickering dot by touch pen until flicker stopped:



Press "Sure" to Complete 25 Pts Cal
Press "Browse Image" to Check the Result



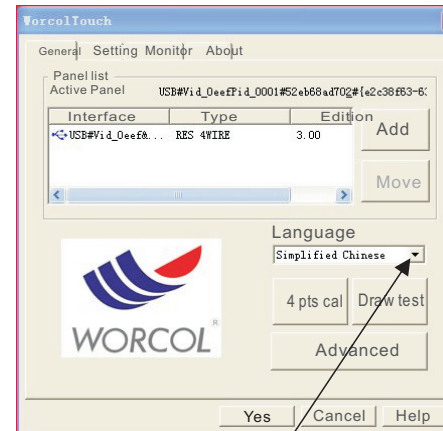
Users can Check the Linearity and Accord by Drawing any Image Such As Above.

Press "Clear" to Cancel all Image then Press "QUIT" to Exit the Image.

Operation of the Touch Panel

● Language Select:

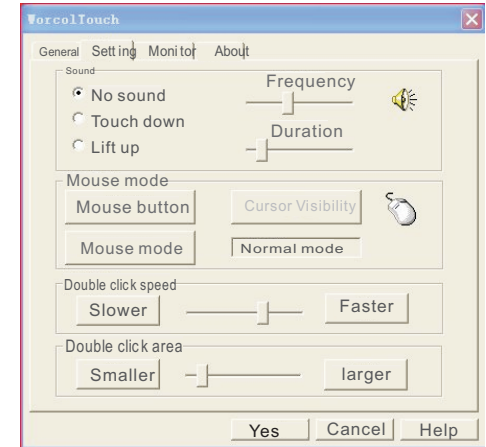
Drive support ten kinds of languages such as English、 French、 German、 Simplified Chinese、 Traditional Chinese、 Japanese、 Korean and so on . Procedure select the optimum language automatically according to the different section of operation. any special requirement , please search by hand:



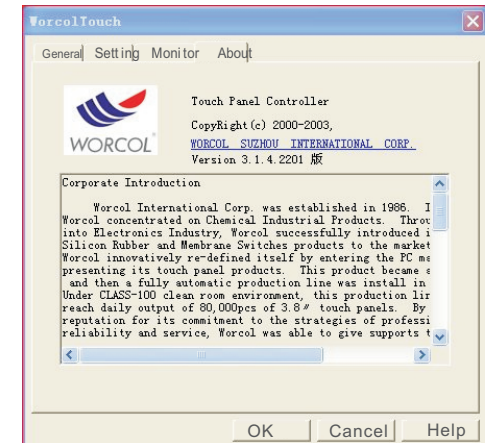
Press the Down-Menu to select the relevant language then the windows will be the selected language automatically.

● Set of the Touch Panel:

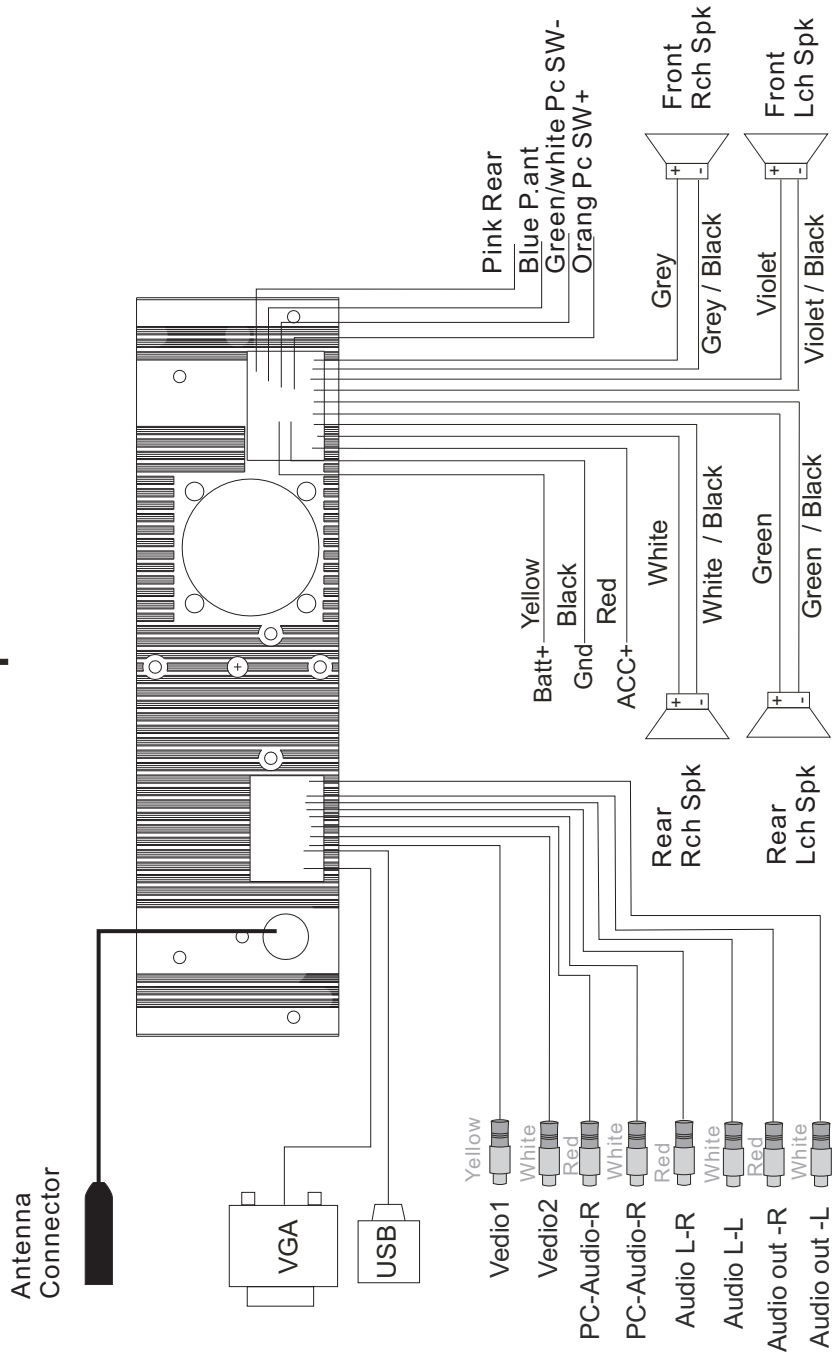
Users select "Set" entry to set the touch panel for special function:



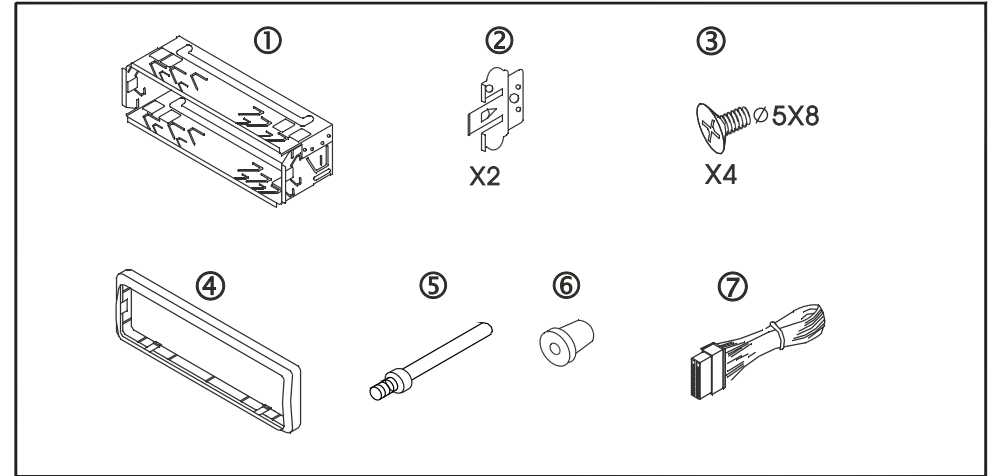
"About" entry display the section number of the Drive and the company's information:



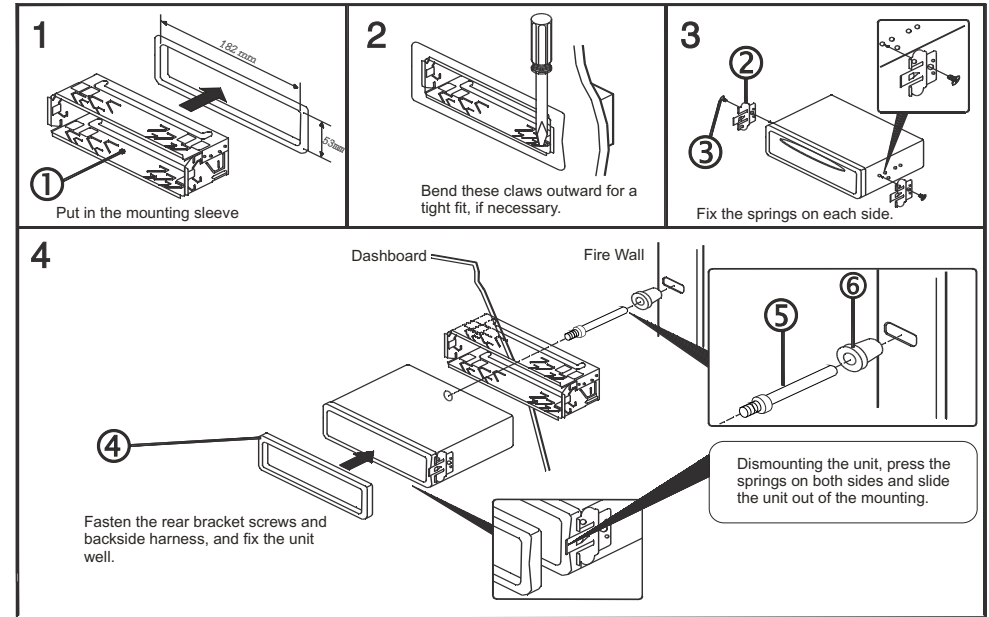
Sketch Map of Connection



Part List (The numbers in the list are keyed to those in the instructions.)



Mounting Example



Specification

1、 Monitor Part :

Seq	Item	Test Condition	Spec	Unit
1	Viewing Angle	CR≥5	Left 70	Deg.
			Right 70	Deg.
			Up70	Deg.
			Down 70	Deg.
2	Contrast		450	
3	Brightness		400	cd/m ²
4	Respond Time		8	Ms
5	Viewing Area		155X87	mm
6	Viewing Dot		800X600	Dot
7	Dot Distance		0.06X0.18	mm
8	Color		262K	Kinds

2、 Common Specification :

Seq	Item	Spec	Unit
1	Rated Working Voltage	14.4	V
2	Range of Working Voltage	9.5 to 16	V
3	Most Working Current	10	A
4	Working Temperature	-10 to +65	°C
5	Storing Temperature	-20 to +75	°C
6	Working Humidity	40% to 80%	RH
7	Storing Humidity	30% to 90%	RH

Specification

3、 AM Part :

Seq	Item	Test Condition	Spec	Unit
1	Sensitivit	S/N=20dB	23	dBu
2	SNR	1KHz 30%	38	dBu
3	Distortion	1KHz 30%	2.5	%
4	Frequency	74dBu Input	50Hz +3	dB
			4KHz- 15	dB

4、 FM Part :

Seq	Item	Test Condition	Spec	Unit
1	Usable Sensitivity	S/N=30dB	6	dBu
2	SNR	Stereo 60dBu Input	55	dB
3	Distortion	MONO 60dBu 1KHz Input	1.5	%
		STEREO 60dBu 1KHz Input	2	%
4	Frequency	60dBu Input	100Hz - 1	dB
			10KHz 14	dB
5	Stereo Separation	60dBu Input	30	dB

5、 Audio Part :

PARAMETER	CONDITIONS	SPEC	UNIT
Voltage gain		34	dB
Output power	THD=10%	26	W
	THD=0.5%	19	W
Distortion	Po=1W	0.1	%
supply voltage ripple rejection		40	dB
Quiescent current		200	Ma

