



Jetway ARM-Based Products

Industrial Grade, High Stability, Support Android and Linux!

Jetway ARM series products, combined with Rockchip platform, fuse together industrial grade components, embedded Long-life, and exclusive software bundled to give you a complete solution and one stop shopping for variety of demand. We offer high performance and high efficiency solutions for POS (Point-of-Sale) terminals, digital signage, video wall, face recognition, multimedia, industrial tablets, intelligent city, smart home, smart home appliances, smart robot, and industrial control, etc. to enhance productivity far beyond what's possible using traditional techniques.

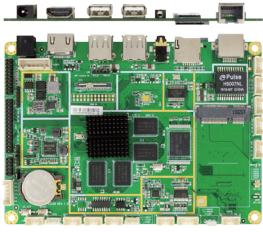
Features and Highlights

- 1. High Performance:** Jetway ARM series motherboards are equipped with the most powerful and energy-efficient ARM-based SoC, Cortex A7, A17, A53, and A35 Quad-core from Rockchip. It can fully support 4K resolution and is capable of handling complex interactive operations.
- 2. High Stability:** Jetway's industrial design covers electromagnetic compatibility and anti-interference ability via excellent PCB layouts with loads of high-quality components.
- 3. High Integration:** One stop shopping for hardware and software together at once. A fine-tuned Jetway system improves a faster and more responsive experience all around.
- 4. High Scalability:** With various inputs/outputs and Jetway expansion modules, it's flexible than ever before to expand or upgrade your external devices.
- 5. Low Power Consumption:** Jetway ARM-Based solutions has the advantages of high performance, low power consumption and easily development, Jetway ARM-Based solutions has the advantages of high performance, low power consumption and easily development, the Rockchip processors showing technical leadership in whole performance and power consumption.
- 6. High Endurance:** The industrial leading Static-Electricity and Surge Protection protect your investment from severe environments.

Product Road Map

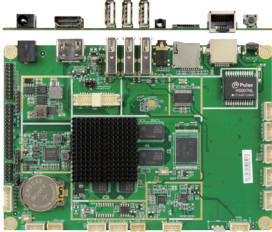


Industrial Grade JARMR3288W-2N



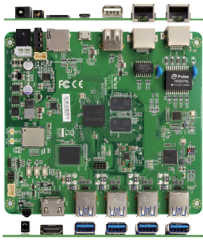
Form Factor	3.5" Form Factor (148 x 102mm)	External I/O	1* HDMI, 1* RJ45, 1* Audio, 1* USB2.0,
Processor/	Rockchip RK3288W Cortex A17		1* DC-in, 1* OTG (Option USB2.0),
CPU	1.8GHz Quad-core processor		1* Micro SD Card socket, 1* SIM Card
Memory	Onboard 2GB DDR3L DRAM (Max 4GB)		holder
	8GB Flash ROM (Max 32GB)	Internal I/O	1* eDP, 1* LVDS, 4* USB2.0, 4* RS232,
Graphic	HDMI / LVDS / eDP		1* GPIO
Resolution	4K @60Hz	Power	12V DC-in
		O.S Support	Android 5.1, Linux 4.4

Support Face Recognition JARMR3288WF-2C



Form Factor	3.5" Form Factor (148 x 102mm)	External I/O	1* HDMI, 1* RJ45, 1* Audio, 2* USB2.0,
Processor/	Rockchip RK3288W Cortex A17		1* OTG (Option USB2.0), 1* DC-in
CPU	1.8GHz Quad-core processor		1* Micro SD Card socket
Memory	Onboard 2GB DDR3L DRAM (Max 4GB)	Internal I/O	1* eDP, 1* LVDS, 4* USB2.0, 4* RS232,
	16GB Flash ROM (Max 32GB)		1* GPIO, 1* MIPI
Graphic	HDMI / LVDS / eDP / MIPI	Power	12V DC-in
Resolution	4K @60Hz	O.S Support	Android 5.1, Linux 4.4

Support 4K Resolution JARMR3328A-2N



Form Factor	uTX Form (120 x 130mm)	External I/O	1* HDMI, 2* RJ45, 4* USB3.0,
Processor/	Rockchip RK3328 Cortex A53 1.5GHz		1* USB2.0, 1* OTG, 1* Micro SD Card
CPU	Quad-core Processor		socket, 1* Audio, 1* IR, 1* DC-in
Memory	Onboard 2GB DDR3L DRAM (Max 4GB)	Internal I/O	N/A
	8GB Flash ROM (Max 32GB)	Power	12V DC-in
Graphic	HDMI	O.S Support	Android 7.1, Linux 4.4
Resolution	4K @60Hz		

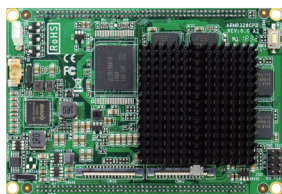
Support 4K Resolution JARMR3328B-2N



Form Factor	uTX Form (120 x 130mm)	External I/O	2* RJ45, 2* USB2.0, 3* USB3.0,
Processor/	Rockchip RK3328 ARM Cortex A53		1* OTG, 1* Micro SD Card socket,
CPU	1.5GHz Quad-core Processor		1* Audio jack, 1* DC-in, 1* HDMI
Memory	Onboard 2GB DDR3L DRAM	Internal I/O	3* USB2.0, 1* RS232 (Full function),
	8GB Flash ROM		1* Mini PCIe, 1* SATA 2.0, 1* mSATA
Graphic	HDMI	Power	12V DC-in
Resolution	4K @60Hz	O.S Support	Android 7.1, Linux 4.4

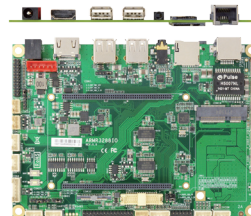
Support Extend I/O Board

JARMR3288CPB-2N



CPU Board

JARMR3288IO

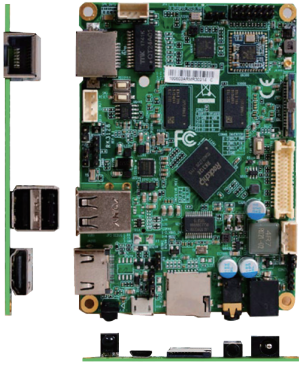


Carrier Board

Form Factor	1.8" Form Factor (85 x 56mm)	Form Factor	3.5" Form Factor (148 x 102mm)
Processor/CPU	Rockchip RK3288 Cortex A17 1.8GHz Quad-core processor	Processor/CPU	Support Rockchip® RK3288 Control Board
Memory	Onboard 2GB DDR3L DRAM (Max 4GB)	Memory	N/A
Graphic	8GB Flash ROM (Max 32GB)	Graphic	LVDS / eDP / HDMI
Resolution	MIPI CSI/ MIPI DSI	Resolution	3840 x 2160@60Hz
External I/O	N/A	External I/O	1* LAN, 1* Micro SD Card socket, 1* SIM Card holder,
Internal I/O	Core plate board support Extend I/O Board		1* AUDIO Jack, 1* USB 2.0, 1* OTG, 1* HDMI, 1* DC-in
Power	12V DC-in	Internal I/O	6* USB2.0, 1* LVDS, 1* eDP, 1* MIPI, 1* MIPI Camera,
O.S Support	Android 5.1, Linux 4.4		4* COM, 1* mPCIe, 1* GPIO,
		Power	12V DC-in
		O.S Support	N/A

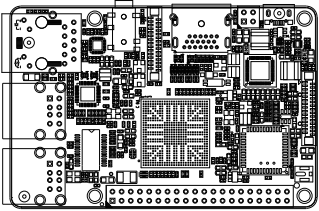
ARM-Based Motherboard Series

Low Cost • High Performance JARMR3128-1A



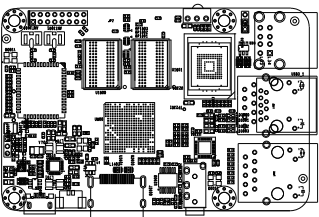
Form Factor	2.5" Form (100 x 72mm)	External I/O	1* LAN, 2* USB2.0, 1* OTG, 1* Audio, 1* HDMI/LVDS/MIPI(Optional),
Processor/ CPU	Rockchip RK3128 ARM Cortex A7 1.2GHz Quad-core Processor		1* DC-in, 1* 1* Micro SD Card socket
Memory	Onboard 1GB DDR3L DRAM 4GB Flash ROM	Internal I/O	1* mPCIe, 1 * Camera I/F
Graphic	1* HDMI /LVDS/MIPI (Option)	Power	12V DC-in
Resolution	1920 x 1080@60Hz	O.S Support	Android 5.1, Linux 4.4

Dragon PIE High-end Solution JARMR3288-DG2N



Form Factor	1.8" Form (85 x 56mm)	External I/O	1* HDMI, 1* Audio, 1* OTG (Co-lay DC-in), 1* Micro SD Card socket, 1*
Processor/ CPU	Rockchip RK3288 Cortex A17 1.8GHz Quad-core processor		DC-in (Co-lay OTG), 4* USB2.0, 1*
Memory	Onboard 2GB DDR3L DRAM (Max 4GB) 8GB Flash ROM (Max 32GB)	Internal I/O	RJ45 1* MIPI (DSI / CSI)
Graphic	HDMI / MIPI (CSI/DSI)	Power	5V DC-in
Resolution	4K @60Hz	O.S Support	Android 5.1, Linux 4.4

Dragon PIE Support 4K Display JARMR3328-DG2N



Form Factor	1.8" Form (85 x 56mm)	External I/O	1* HDMI, 1* Audio, 1* OTG (Co-lay DC-in), 1* Micro SD Card socket,
Processor/ CPU	Rockchip RK3328 ARM Cortex A53 1.5GHz Quad-core Processor		2* USB2.0, 2* RJ45 (Co-lay 1* USB3.0
Memory	Onboard 2GB DDR3L DRAM (Max 4GB) 8GB Flash ROM (Max 32GB)	Internal I/O	+ 1* RJ45) 1* GPIO
Graphic	HDMI	Power	5V DC-in
Resolution	4K @60Hz	O.S Support	Android 7.1, Linux 4.4

Dragon PIE Entry Level Solution JARMPX30-DG1A

Coming Soon

Form Factor	1.8" Form (85 x 56mm)	External I/O	1* HDMI, 1* Audio, 1* OTG (Co-lay DC-in), 1* Micro SD Card socket,
Processor/ CPU	Rockchip PX30 Cortex A35 1.5GHz Quad-core processor		1* DC-in (Co-lay OTG), 4* USB2.0,
Memory	Onboard 1GB DDR3L DRAM (Max 4GB) 4GB Flash ROM (Max 32GB)	Internal I/O	1* RJ45 2* MIPI (CSI/DSI), 1* GPIO
Graphic	HDMI / MIPI (CSI/DSI)	Power	5V DC-in
Resolution	1920 x 1080 @60Hz	O.S Support	Android 7.1, Linux 4.4

HBJC920R3288-2N



Form Factor	3.5" SBC Form Factor	Rear Panel I/O	1* RJ45, 1* HDMI, 1* Audio Jack, 1* USB2.0, 1* OTG (Option USB2.0), 1* RS485, 1* Micro SD Socket, 1* Power button, 1* SIM Card Socket, 1* 12V DC-Jack
Processor/CPU	Rockchip ARM Cortex A17 RK3288 1.8GHz Quad core	Front Panel I/O	2* Antenna hole
Memory	Onboard 2GB DDR3L DRAM (Max 4GB) Onboard 8G Flash ROM (Max 32GB)	Power	DC12V-5.0A AC 90~240V input
		Dimensions	190 x 115.0 x 22mm
		O.S Support	Android 5.1

HBJC921R3288-2N



Form Factor	3.5" SBC Form Factor	Rear Panel I/O	1* RJ45, 1* HDMI, 1* Audio Jack, 1* USB2.0, 1* OTG (Option USB2.0), 1* RS485, 1* Micro SD Socket, 1* Power button, 1* SIM Card Socket, 1* 12V DC-Jack
Processor/CPU	Rockchip ARM Cortex A17 RK3288 1.8GHz Quad core	Front Panel I/O	2* Antenna hole, 1* Total switch control
Memory	Onboard 2GB DDR3L DRAM (Max 4GB) Onboard 8G Flash ROM (Max 32GB)	Power	DC12V-5.0A AC 90~240V input
		Dimensions	190 x 115.0 x 22mm
		O.S Support	Android 5.1

HBJC922R3328-2N



Form Factor	uTX SBC Form Factor	Rear Panel I/O	2* RJ45, 1* Audio Jack, 1* USB2.0, 1* OTG, 1* Micro SD Socket, 1* Power button, 1* 12V DC-Jack, 2* Antenna hole
Processor/CPU	Rockchip ARM Cortex A53 RK3328 1.5GHz Quad core	Front Panel I/O	1* IR, 1* HDMI(2.0), 4*USB3.0
Memory	Onboard 2GB DDR3L DRAM (Max 4GB) Onboard 8G Flash ROM (Max 32GB)	Power	DC12V-5.0A AC 90~240V input
		Dimensions	160.0 x 120.4 x 22.0mm
		O.S Support	Android 7.1

HBJC923R3328-DG2N



Form Factor	1.8" SBC Form Factor	Rear Panel I/O	2* RJ45(Co-lay 1* USB3.0 +1* RJ45), 2* USB2.0, 1* HDMI, 1* Audio Jack 1* OTG (Co-lay DC IN), 1* Micro SD Socket
Processor/CPU	Rockchip ARM Cortex A53 RK3328 1.5GHz Quad core	Front Panel I/O	N/A
Memory	Onboard 2GB DDR3L DRAM (Max 4GB) Onboard 8G Flash ROM (Max 32GB)	Power	DC 5V-3.0A AC 90~240V input
		Dimensions	94.3 x 60.6 x 31.5mm
		O.S Support	Android 7.1

Jetway Information Co., Ltd.

9F., No.207, Sec. 3, Beixin Rd., Xindian Dist., New Taipei City 23143, Taiwan

Tel: +886-2-89132711 Mail: support_team@jetway.com.tw

China - Dongguan Branch

No. 605, 8th Commercial Office Building, Vanke Center, Changqing South Road, Changan, Dongguan City, 511700, China

Tel: +86-769-2101-8010 Mail: support_team@jetway.com.tw

USA - Jetway Computer Corp.

8058 Central Ave, Newark, CA 94560, USA

Tel: +1-510-857-0130 Mail: sales@jetwaycomputer.com



Z-A104-F